

CorkSport Aluminum Shift Knob

2004+ Mazda's with manual transmissions.



Thank you for purchasing the CorkSport Mazda Aluminum Shift Knob. Adjustable weights to adjust your throw, increase the response and tailor it to you. Please let us know your feedback by submitting a review at:

<http://www.corksport.com/corksport-shift-knob.html>

Materials and Time:



General Info.

Part #: Gen-9-006
Time Est: 10 minutes
Wrench Rating: 1/5



Tooling List

5mm Allen Wrench



Parts List

One (1) CorkSport Shift Knob Cap
One (1) CorkSport Shift Knob Body
One (4) CorkSport Shift Knob Weights
One (1) CorkSport Shift Knob Wave Spring

Detailed Instructions

1. Install the CorkSport Shift knob

- a) Locate and remove the factory shift knob. Simply unscrew it from the factory shifter. CorkSport leather shift knob shown in **Figure 1a**.



Figure 1a

- b) Install the CorkSport adjustable shift knob on the factory shifter. It will screw down until it meets the shift boot. Shown installed in **Figure 1b**.



Figure 1b



This completes the installation of your CorkSport Shift Knob.

Need Help With Your Installation?
Call (360) 260-CORK

2. Adjusting the CorkSport Shift Knob



The CorkSport Shift Knob is shipped with the maximum amount of weight installed. To reduce the weight, please follow these instructions.

a) Remove the shift knob from the car by following step 1a.

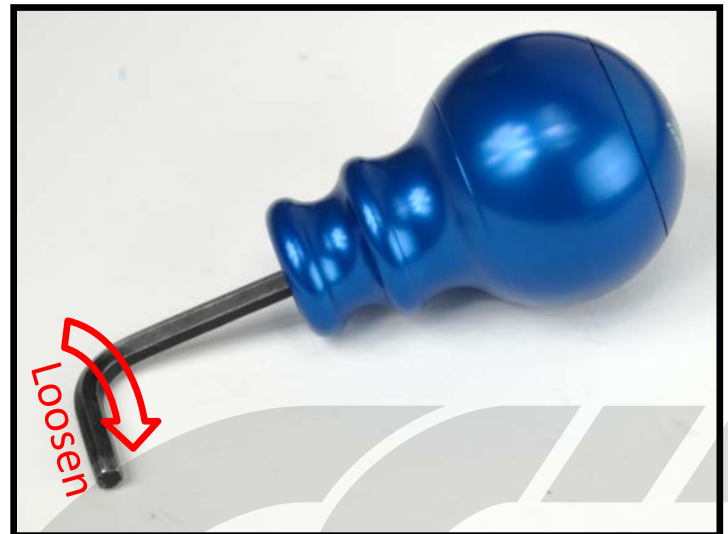


Figure 1a

b) Unscrew the cap using a 5mm Allen wrench to start the cap unthreading. Finish unscrewing the cap by hand. **Figure 1a** show the how to use the Allen wrench. **Figure 1b** shows the point you should start using your hand.



Figure 1b

c) Select the desired weight.

- 1) No Weights – 175g
- 2) 1 Weight – 215g
- 3) 2 Weights – 250g
- 4) 3 Weights – 285g
- 5) 4 Weights – 320g

d) Place the desired amount of weight(s) in the body of the shift knob.

e) Install the spring on top of the weight. **Figure 1c** shows the correct way to install 3 weights as an example.

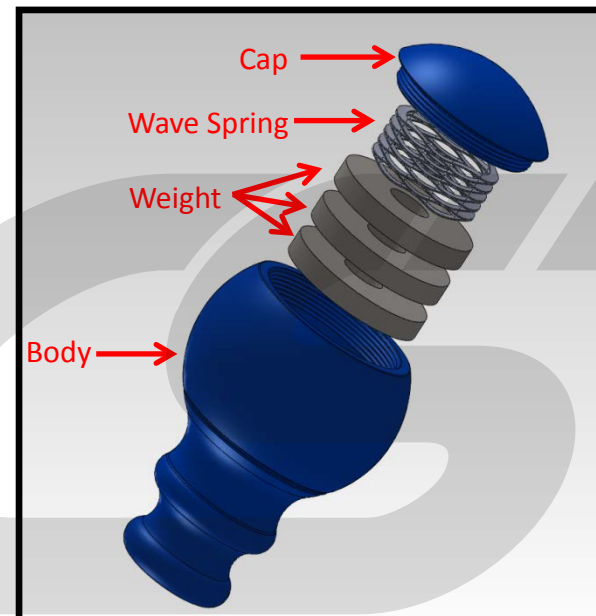


Figure 1c

2. Adjusting the CorkSport Shift Knob Continued...



If no weights are being used then you don't need to use the spring inside the body.



If only using one weight the spring pressure is very low and you might hear some rattling. It is better to assemble to shift knob with the spring first then the weight on top as shown in **Figure 1d**.

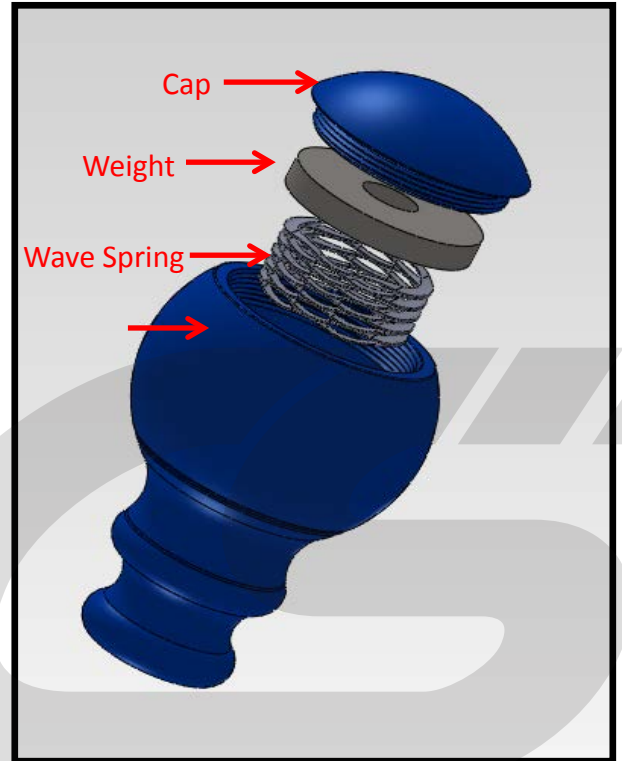


Figure 1d

f) **Replace the cap on the top of the body by hand.**

Final assembly shown in **Figure 1e**.



Be careful not to cross thread the cap onto the body. Screw the cap counter clock-wise until the cap seats to the body. Then, tighten the cap clock-wise by hand. No not tighten with Allen.



No not tighten with Allen.

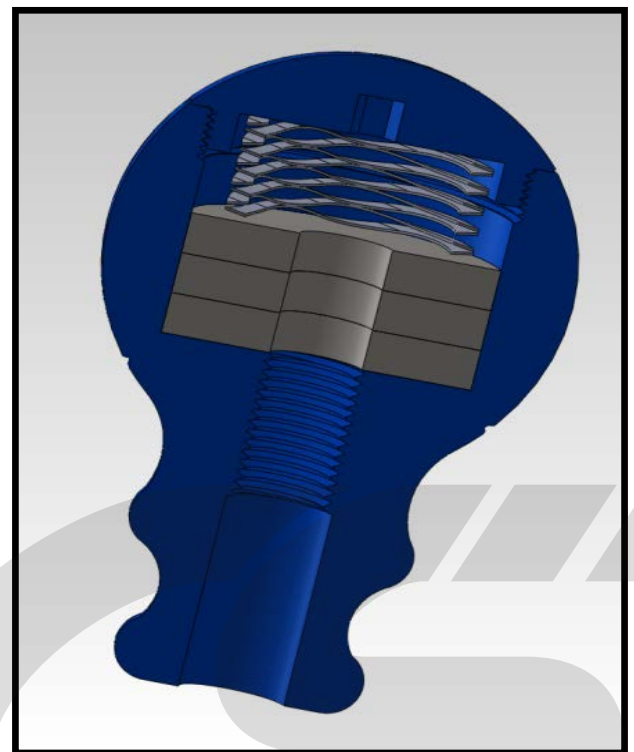


Figure 1e

What's Next:

CORKSPORT Adjustable Short Shifter

The CorkSport Adjustable Short Shifter designed a direct OEM replacement, maintains OEM fitment and allows you to independently adjust your throw distance and shift knob height. **Currently available for the 2012-2013 Mazda 3 6-Speed.**



CORKSPORT Hood Strut Kits



The CorkSport While working on your Mazda 3 you keep on running into the same problem, the hood prop is always in the way. It does its job of keeping the hood from falling on your head, but it is always difficult when working in the engine compartment

CORKSPORT LED Light Kit

Enhance the look of your interior by adding custom LED interior lights. CorkSport's LED light kit replaces the incandescent bulbs for the dome light, map lights, rear hatch light (or trunk if you have a sedan), glove box light, visor lights, and license plate lights. The lights simply plug in with no custom adapters or wiring required.



Need Help With Your Installation?
Call (360) 260-CORK