

CorkSport Front DRL LED lights

2010-2011 Mazda 3



Thank you for purchasing the CorkSport Mazda 3 LED DRL bumper insert. Now you too can have daytime running lights on your Mazda 3! This simple to install upgrade will improve the lighting on your vehicle by adding a LED DRL to your bumper. Installation does not require cutting or any permanent modifications to your vehicle. These were designed to fit seamlessly into the bumper inset that comes standard from the factory. We hope you enjoy your new part! Please let us know your feedback by submitting a review today at www.corksport.com

Pre-Installation Notes:



These instructions were written for reference only and the use of a factory service manual is recommended. Please read these instructions thoroughly prior to starting installation



How our instructions work: To best cover all of our customers experience levels, we have included an overview checklist for the more technically advanced users along with step-by-step instructions for customers that require additional detail.



These installation instructions were written using a 2010 Mazda 3 Sedan.

Materials and Time:



General Info.

Part #: Axl-8-063
Time Est: 1 Hour
Wrench Rating: 2/5



Tooling List

Flathead Screwdriver
Philips Screwdriver
Needle nose pliers



Parts List

Two (2) LED DRL Lights
One (1) Wire Extension for Lights
One (1) Battery Wiring
One (1) Relay Box
Two (3) Wiring clips
Five (5) Small Zip Ties


Need Help With Your Installation?
Call (360) 260-CORK

Checklist

This is an overview of each step in the build. You can use this as a reference and a checklist as you button up the work on your car

 These instructions are made for 2010+ Mazda 3 sedans

1. Install the CorkSport front DRL LEDs

- a) **Open hood and remove the 6 body clips and 2 Philips head bolts from the top of the front bumper.** Refer to Figure 1a. 3 body clips are circled in red and 1 Philips bolt is circled in green. Repeat for other side of vehicle.
 -  The release the body clips pull the center up with a small flat head screw driver then pull the entire assembly out.
- b) **Pull back the corner of the bumper slightly and route the black and red wires down between the front bumper and the head lights.** Figure 1b shows the drivers side headlight and the location to start feeding the wires is circled in red. Figure 1c shows where you want the wires to come out of the bumper
- c) **Connect the DRL LED lights as shown in Figure 1c.**
- d) **Push the DRL light back into place making sure it pops into place (shown Figure 1d).** Repeat on the the other side of the car.
- e) **Replace the 6 body clips and 2 Philips bolts (shown Figure 1a).**
- f) **Route the wires similar to the path in Figure 1e.** Zip tie the wires to secure them.
- g) **Connect the Relay box (circled in red in Figure 1f).** Secure it with zip ties to the head light wiring behind the head light.
- h) **Connect the black wire coming from the relay box to a ground location. The shock tower ground is an easy location.** (shown in Figure 1g). Use the factory 10mm bolt to attach the wire.
- i) **Locate the plug shown in Figure 1h and attach the red wire from the Relay box to the orange wire of this plug as shown circled in red in Figure 1i.** Push down on the metal center with pliers to pierce both wires.
 -  The blue wire coming from the Relay box is an optional connection. This can be hooked up to a 12v switch to turn of an on the lights. When not using the blue wire the DRL LEDs will come on when the head light switch is in the running light or the ON position.
- j) **Zip tie all the wires in a good location so that they will not interfere with any moving parts.**
- k) **Test the lights by turning on the Headlight switch (shown in Figure 1j).**




This completes the installation of your CorkSport DRL LED Lights for Mazda 3 . Check out our [knowledgebase](#) for additional install information

Detailed Instructions

 These instructions are made for 2010+ Mazda 3

1. Install the CorkSport front DRL LEDs

- a) Open hood and remove the 6 body clips and 2 Philips head bolts from the top of the front bumper. Refer to Figure 1a. 3 body clips are circled in red and 1 Philips bolt is circled in green. Repeat for other side of vehicle.

 The release the body clips pull the center up with a small flat head screw driver then pull the entire assembly out.

- b) Pull back the corner of the bumper slightly and route the black and red wires down between the front bumper and the head lights. Figure 1b shows the drivers side headlight and the location to start feeding the wires is circled in red. Figure 1c shows where you want the wires to come out of the bumper. The shorter wires will be on the drivers side and the longer wires will route to the passenger side. The passenger side will be similar to route the wires.

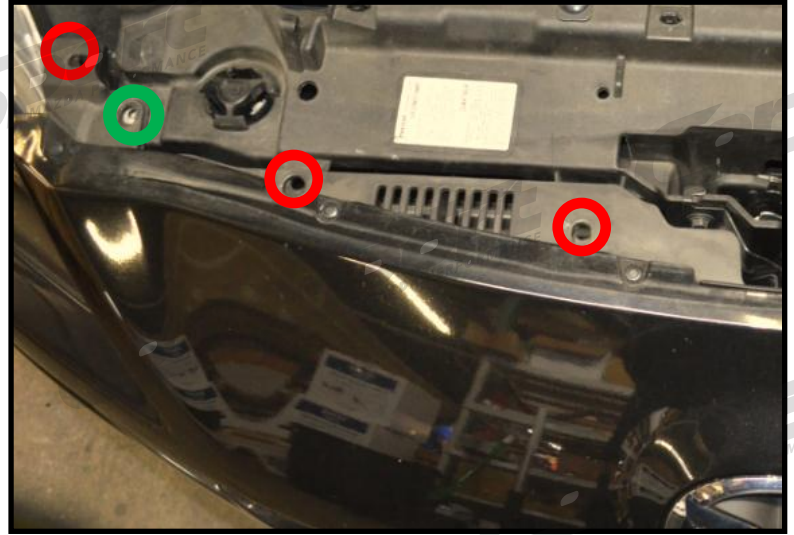


Figure 1a



Figure 1b

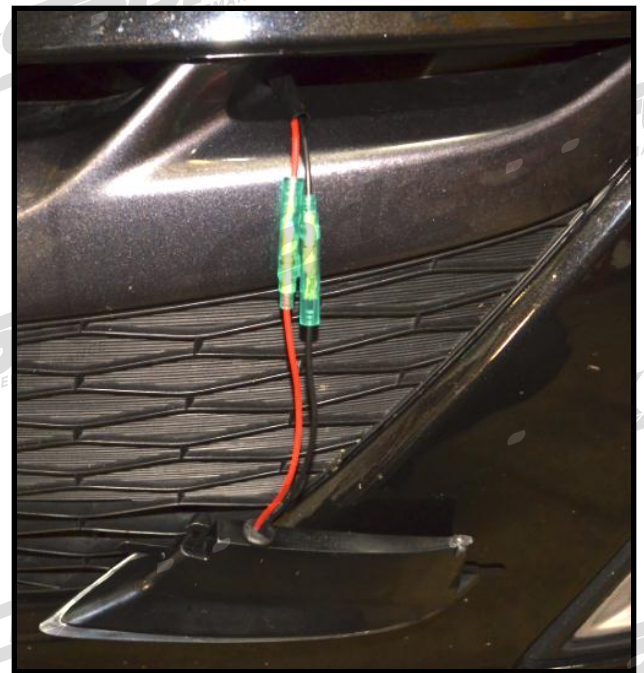


Figure 1c

- c) Connect the DRL LED lights as shown in Figure 1c.
- d) Push the DRL light back into place making sure it pops into place (shown Figure 1d). Repeat on the the other side of the car.



Figure 1d

1. Install the CorkSport front DRL LEDs Continued...

- e) Replace the 6 body clips and 2 Philips bolts (shown **Figure 1a**).
- f) Route the wires similar to the path in **Figure 1e**. Zip tie the wires to secure them.

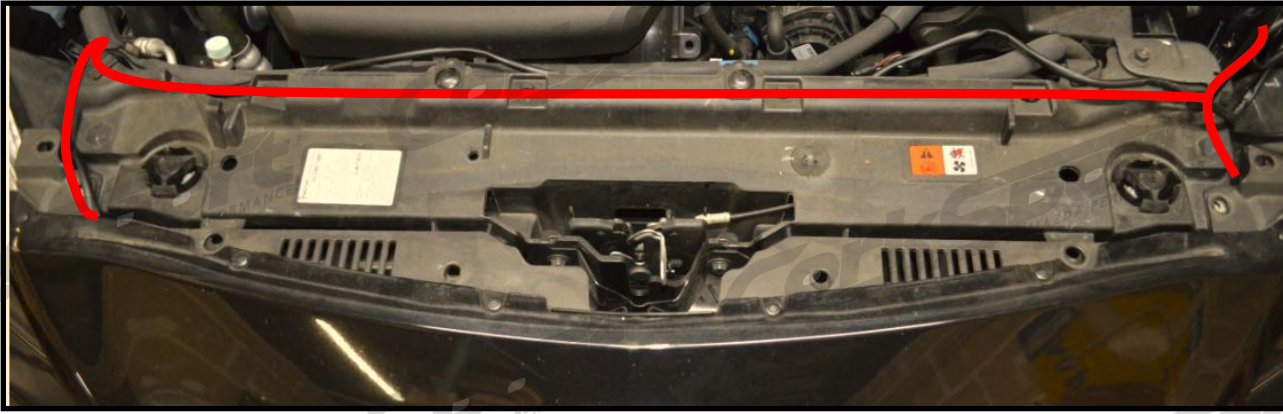


Figure 1e

- g) Connect the Relay box (circled in red in **Figure 1f**). Secure it with zip ties to the head light wiring behind the head light.

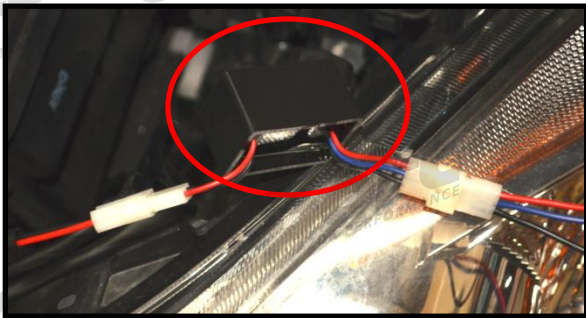


Figure 1f



Figure 1g

- h) Connect the black wire coming from the relay box to a ground location. The shock tower ground is an easy location. (shown in **Figure 1g**). Use the factory 10mm bolt to attach the wire.

- i) Locate the plug shown in **Figure 1h** and attach the red wire from the Relay box to the orange wire of this plug as shown circled in red in **Figure 1i**. Push down on the metal center with pliers to pierce both wires.

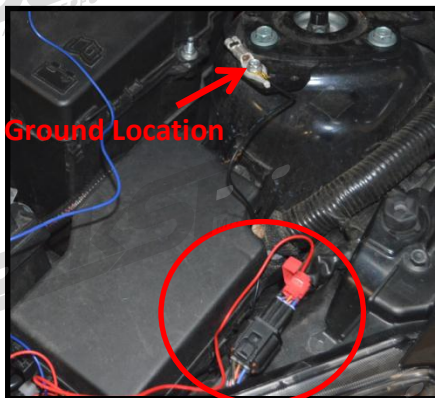


Figure 1h

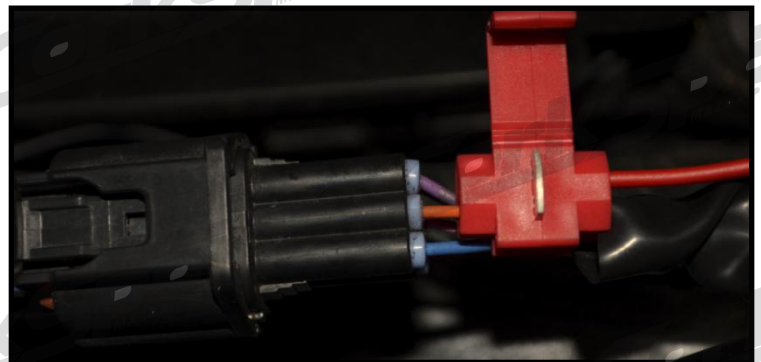


Figure 1i



The blue wire coming from the Relay box is an optional connection. This can be hooked up to a 12v switch to turn off and on the lights. When not using the blue wire, the DRL LEDs will come on when the head light switch is in the running light or the ON position.

Need Help With Your Installation?

Call (360) 260-CORK

1. Install the CorkSport front DRL LEDs Continued...

- j) Zip tie all the wires in a good location so that they will not interfere with any moving parts.
- k) Test the lights by turning on the Headlight switch (shown in **Figure 1j**).



Figure 1i



This completes the installation of your CorkSport DRL LED Lights for Mazda 3. Check out our [knowledgebase](#) for additional install information

What's Next:

CorkSport LED Rear Bumper Lights



Get high performance bumper lights for your Mazda 3 or Mazdaspeed 3 with the CorkSport direct replacement rear bumper LED light kit. These premium quality light assemblies include 16 LED lights in each lens and are built for durability and reliability. Precision manufactured to match the OEM factory specifications, the CorkSport LED Rear Bumper Lights are easy to install and offer a perfect fit for your Mazda 3 or Mazdaspeed 3. Available in red and smoked lenses <http://www.corksport.com/corksport-led-rear-bumper-lights.html>