

CorkSport Front Strut Tower Bar

2010+ Mazdaspeed 3



Thank you for purchasing the CorkSport Front Strut Tower Bar for the Mazdaspeed 3. This easy to install piece will increase cornering ability and give more feedback from your Mazda's suspension. Made from polished aircraft grade 6061 aluminum, the CorkSport Mazdaspeed 3 Front Tower Bar will strengthen your Mazda by reducing flex, making the chassis more rigid. We hope you enjoy your new CorkSport Mazdaspeed 3 Front Strut Tower Bar. Please let us know your feedback by submitting a review at

<http://www.corksport.com/corksport-mazdaspeed-3-lower-arm-brace.html>

Pre-Installation Notes:



Make sure your vehicle is completely cooled down prior to starting installation. If you are going to work on your car within an hour or two of having driven it, use a fan to cool off the car.



These instructions were written for reference only and the use of a factory service manual is recommended. Please read these instructions thoroughly prior to starting installation



These installation instructions were written using a 2010 Mazdaspeed 3. Other year Mazda 3 and Mazdaspeed3 models will be similar.

Materials and Time:



General Info.

Part #: Axl-3-020
Time Est: 0.5 hours
Wrench Rating: 2/5



Tooling List

14mm socket
3/8" Drive Ratchet
Torque Wrench



Parts List

One (1) CorkSport Front Strut Tower Bar

Need Help With Your Installation?

Call (360) 260-CORK

Detailed Instructions

These installation instructions were made for a 2010 Mazdaspeed 3. Other year Mazdaspeed 3 models will be similar.

1. Install The CorkSport Lower Arm Bar



Before installing you should park your car on a level surface to ensure that your installation of the front strut tower bar will not be preloaded with the chassis out of alignment. Set the emergency brake.

- a) Remove the 6 14mm strut top bolts. There are three on each side of the vehicle (shown [Figure 1a](#)).



On 2013+ Models you may have to bend down tabs at circled locations in [Figure 1b](#). These tabs are only used during vehicle assembly.

- b) Torque bolts to 14-20 ft.lbs.
- c) Check engine compartment for clearance. Generally between the battery and the strut tower bar
- d) Test drive the car then re-torque the bar to verify correct tightness of the bar.

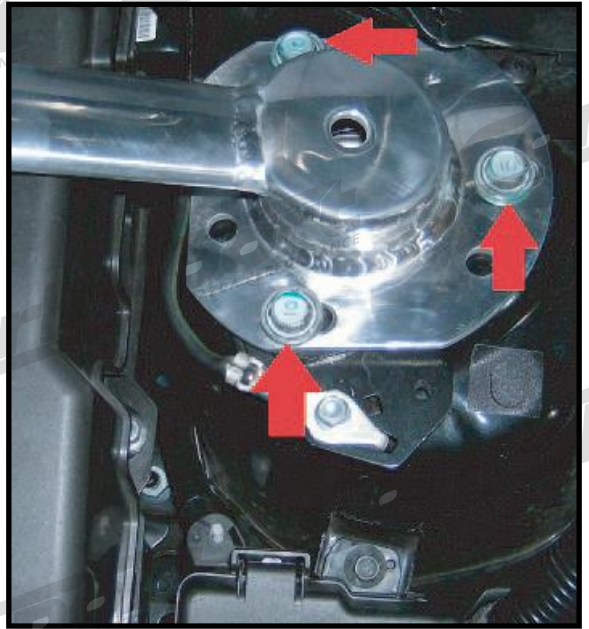


Figure 1a

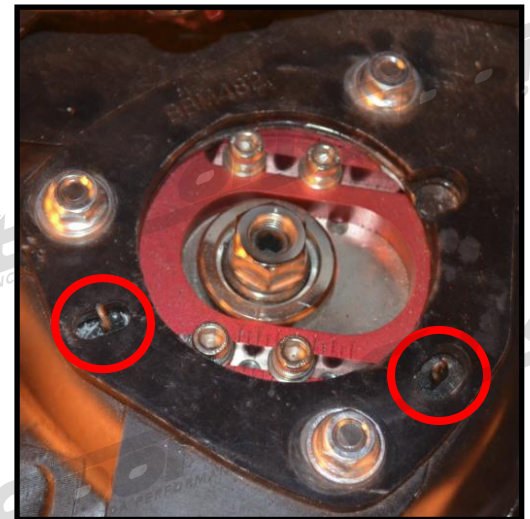
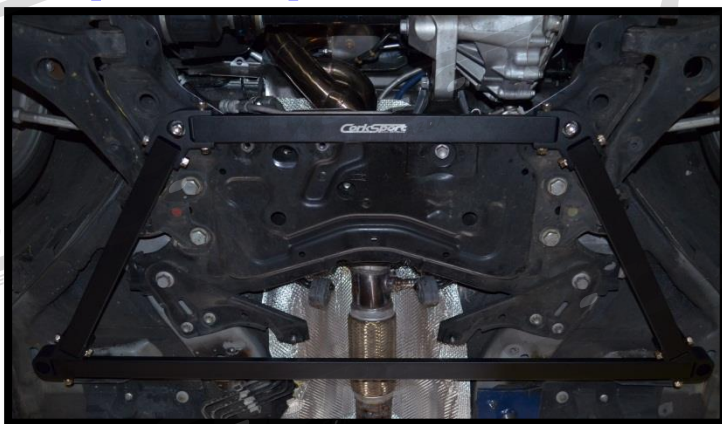


Figure 1b

This completes the installation of your CorkSport Front Strut Tower Bar. Listen for unusual sounds when driving. If you hear anything check the torque and position of the bar.

[CorkSport Mazdaspeed 3 and Mazda 3 Underbody 4-Brace Set](#)



Reduce undesirable chassis flex and increase control during hard cornering and acceleration with the CorkSport Mazdaspeed 3 and Mazda 3 underbody 4-bar brace set. An often overlooked performance enhancement, especially on vehicles with lots of modifications, reinforcing the chassis with an underbrace set will reduce twisting of the chassis by linking the frame to the sub-frame thus locking the front sub-frame in place.

Need Help With Your Installation?
Call (360) 260-CORK