

INSTALLATION INSTRUCTIONS



CORKSPORT Performance Steering Wheel

2017-2018 Mazda 3, 2017+ Mazda CX-5, 2018+ Mazda CX-3

PART #: AXM-9-343-1X

Need Help With Your Installation? Call (360) 260-CORK



*We absolutely, positively,
deliver - every time.*

CORKSPORT.COM



CORKSPORT Performance Steering Wheel

2017-2018 Mazda 3, 2017+ Mazda CX-5, 2018+ Mazda CX-3

PRODUCT DESCRIPTION:

Thank you for purchasing the CorkSport Performance Steering Wheel for facelifted Mazda 3, CX-5, and CX-3. With the slight changes Mazda made to the facelifted GEN3 comes a brand new steering wheel to match. We took this great new design and elevated it to CorkSport standards! Not only is the CS wheel a great visual boost to your interior, you'll love driving your Mazda even more! The thicker outer ring and enhanced thumb grooves give you greater driver confidence while retaining comfort for long drives!

Please let us know your feedback of the by submitting a review at: <https://corksport.com/2017-18-mazda-3-2017-cx-5-2018-cx-3-leather-alcantara-steering-wheel.html>

PRE-INSTALLATION NOTES:



Disconnection of a safety system is required during installation. It is critical to disconnect and de-charge the electrical system before proceeding with installation.



These instructions were written for reference only and the use of a factory service manual is recommended.



How our instructions work: To best cover all of our customers experience levels, we have included a table of contents/order of operations along with step-by-step instructions.



These instructions were written using a 2018 Mazda 3. Installation on other models is near identical



Each steering wheel is hand-built, therefore each steering wheel may have slight variation and fitment. A very small gap between OE panels and leather can be expected.



Steering wheel heater (if equipped) will no longer function after installation of the CS steering wheel.

MATERIALS & TIME:

GENERAL INFO:



Time Est:
2hr



Difficulty:
3/5



CEL:
No



Warranty:
2-Year

TOOLING LIST:

- 10mm Wrench
- 21mm Socket
- 1/2" Drive Ratchet
- 1/2" Drive Extension
- 5mm Allen Key
- Small Flathead Screwdriver or Small Pick
- Phillips Screwdriver

PARTS LIST:

- One (1) CorkSport Performance Steering Wheel with Leather Inserts
- OR
- One (1) CorkSport Performance Steering Wheel with Alcantara Inserts

ORDER OF OPERATIONS & TABLE OF CONTENTS:



OEM STEERING WHEEL REMOVAL

Section 1: Removing the Airbag

Pg. 4-6

Section 2: Removing the OEM Steering Wheel

Pg. 7



STEERING WHEEL COMPONENT TRANSFER

Section 3: Removing the Trim & Buttons from OEM Wheel

Pg. 8-10

Section 4: Installing the Trim & Buttons on CorkSport Wheel

Pg. 10-11



CORKSPORT STEERING WHEEL INSTALLATION

Section 5: Installing the CorkSport Steering Wheel

Pg. 12

DETAILED INSTRUCTIONS:

1. Removing the Airbag



Removal of the airbag is dangerous. Follow the instructions below carefully to ensure you do not injure yourself.

- a) Disconnect the negative battery terminal with a 10mm wrench. .
- b) Turn on your hazard lights and wait approximately 30 minutes. This will ensure your electrical system is de-charged prior to airbag removal. If unsure if you waited long enough, check if any interior lights will illuminate.

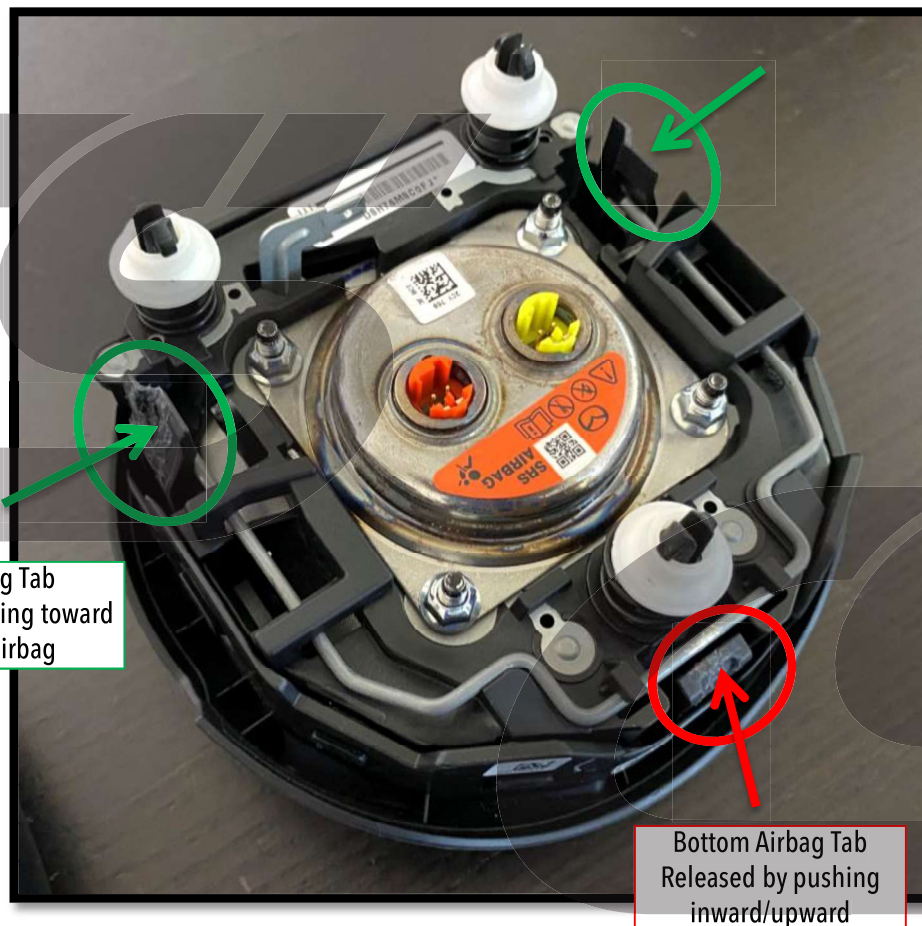


Be patient when releasing the airbag tabs. This can be a frustrating task so take your time. Check out our video at the link below to help save you some time. This is the earlier Mazda 3 wheel but the procedure is the same.

https://www.youtube.com/watch?v=xF1V3U5VxTE&ab_channel=CorkSportMazdaPerformance



Figure 1a below details the clips you will be releasing in order to remove the airbag. These are shown with the airbag out of the car for easy reference. **Figures 1b** and **1c** on the next page show further detail on how to release these tabs.

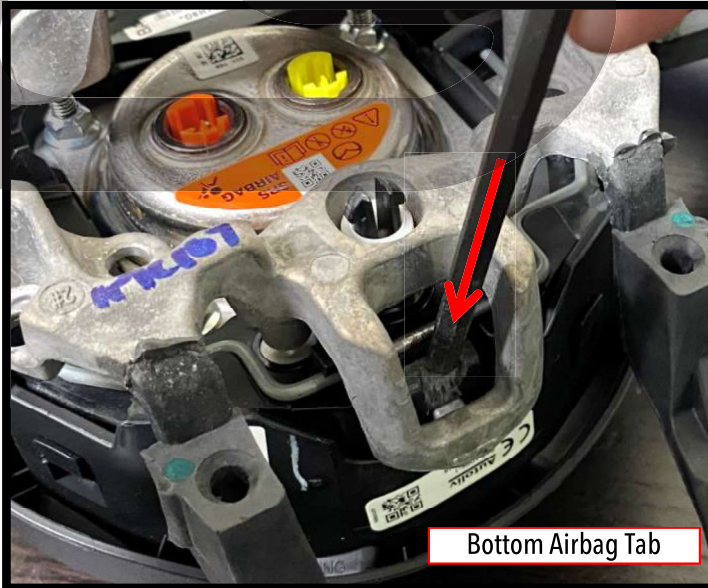


Side Airbag Tab
Released by prying toward
center of airbag

Bottom Airbag Tab
Released by pushing
inward/upward

DETAILED INSTRUCTIONS:

1. Removing the Airbag (continued)



Bottom Airbag Tab

Figure 1b



Side Airbag Tab

Figure 1c

- c) Rotate your steering wheel 180° so that the Mazda emblem is upside-down.
- d) Using a 5mm Allen wrench, push the bottom airbag tab to pop the bottom of the airbag free from the wheel. Access point shown in Figure 1d with red circle. Figure 1e shows what this looks like on the vehicle.



Figure 1d



Figure 1e

DETAILED INSTRUCTIONS:

1. Removing the Airbag (continued)

- e) Rotate your steering wheel back 90° so that the Mazda emblem is sideways.
- f) Using a 5mm Allen wrench, pry the side airbag tab toward the center of the wheel to pop the side of the airbag free from the wheel. Access point shown in **Figure 1d** on previous page with **green circle**. **Figure 1f** shows what this looks like on the vehicle.
- g) Rotate your steering wheel 180° so that the Mazda emblem is sideways in the other direction.
- h) Repeat Step 1f for the opposite side airbag tab. Your airbag will now only be connected by wires, be careful to not damage these wires.
- i) Inspect the back side of the airbag and remove the black locking clips from the yellow and orange wiring connectors. Pry them free with a small screwdriver. **Figure 1g** shows the locking clips, with one partially removed.
- j) Remove the orange and yellow wiring connectors from the airbag. They can be somewhat difficult to remove. Very gentle prying with a flathead screwdriver can help free them.
- k) Remove the ground wire from the airbag by pushing in the tab shown with a **blue arrow** in **Figure 1h**.
- l) The airbag is now free. Set it aside where it won't get damaged.



Figure 1f



Figure 1g

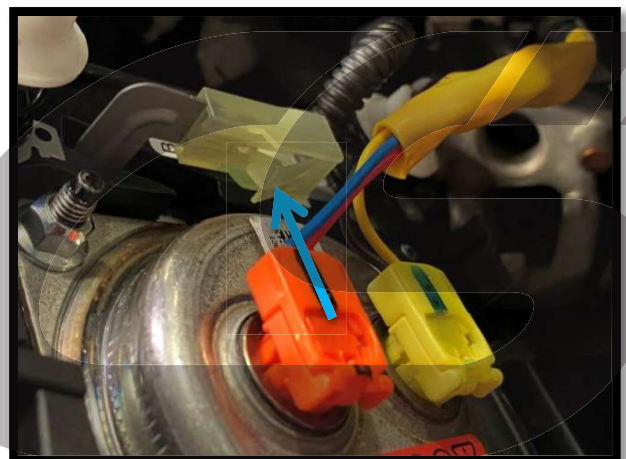


Figure 1h

DETAILED INSTRUCTIONS:

2. Removing the OEM Steering Wheel



Rotate your steering wheel so the wheels are straight. This will ensure your CS wheel is aligned when installing.

- a) **Disconnect the wires that go from your steering wheel to the steering column.** These are shown with **red arrows** in **Figure 2a**. Depending on vehicle options, you may only have one connector instead of two.
- b) **Using a 21mm socket remove the steering wheel center bolt.** You will need to hold the steering wheel in order to do so. Shown with **blue arrow** in **Figure 2a**.
- c) **The steering wheel can now be removed from the vehicle.** Use caution during removal to not damage any wires that will pass through the center of the wheel.

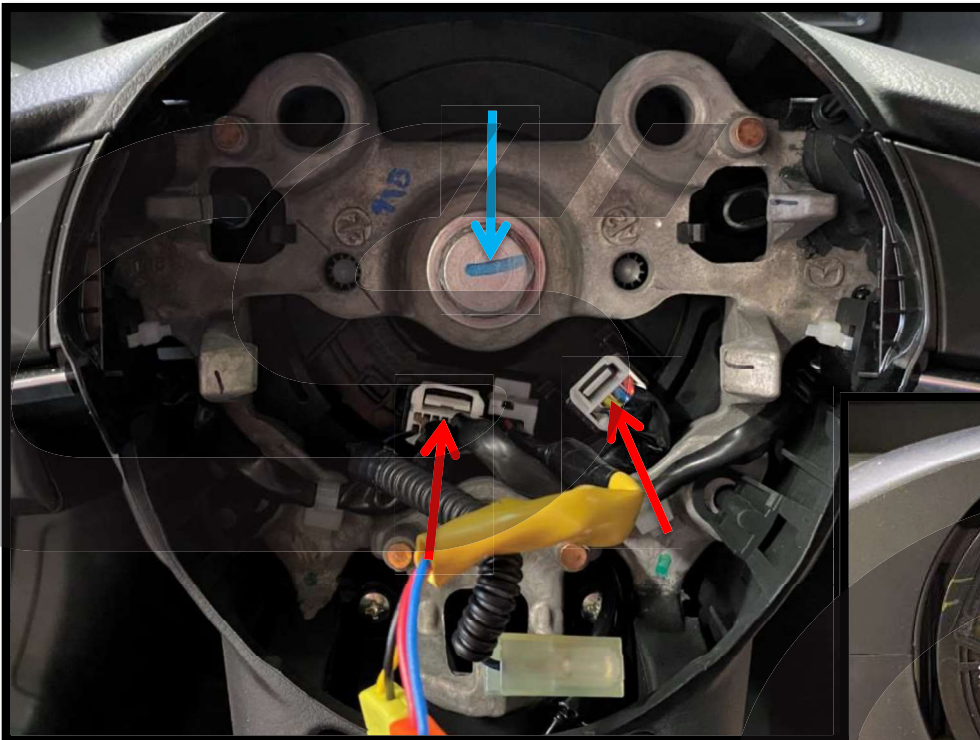


Figure 2a



Do not rotate the wire cluster from its original position once the steering wheel is removed.



Figure 2b

DETAILED INSTRUCTIONS:

3. Removing the Trim & Buttons from OEM Wheel



Use caution when removing the trim and buttons to ensure you do not break any clips.

- a) If equipped, remove the four screws holding the paddle shifters to the **backside of the steering wheel**. The paddle shifters can then be removed with the rest of the rear trim. The vehicle used for images did not have paddle shifters equipped however **Figure 3a** shows approximate locations for the screws with **red dots**.

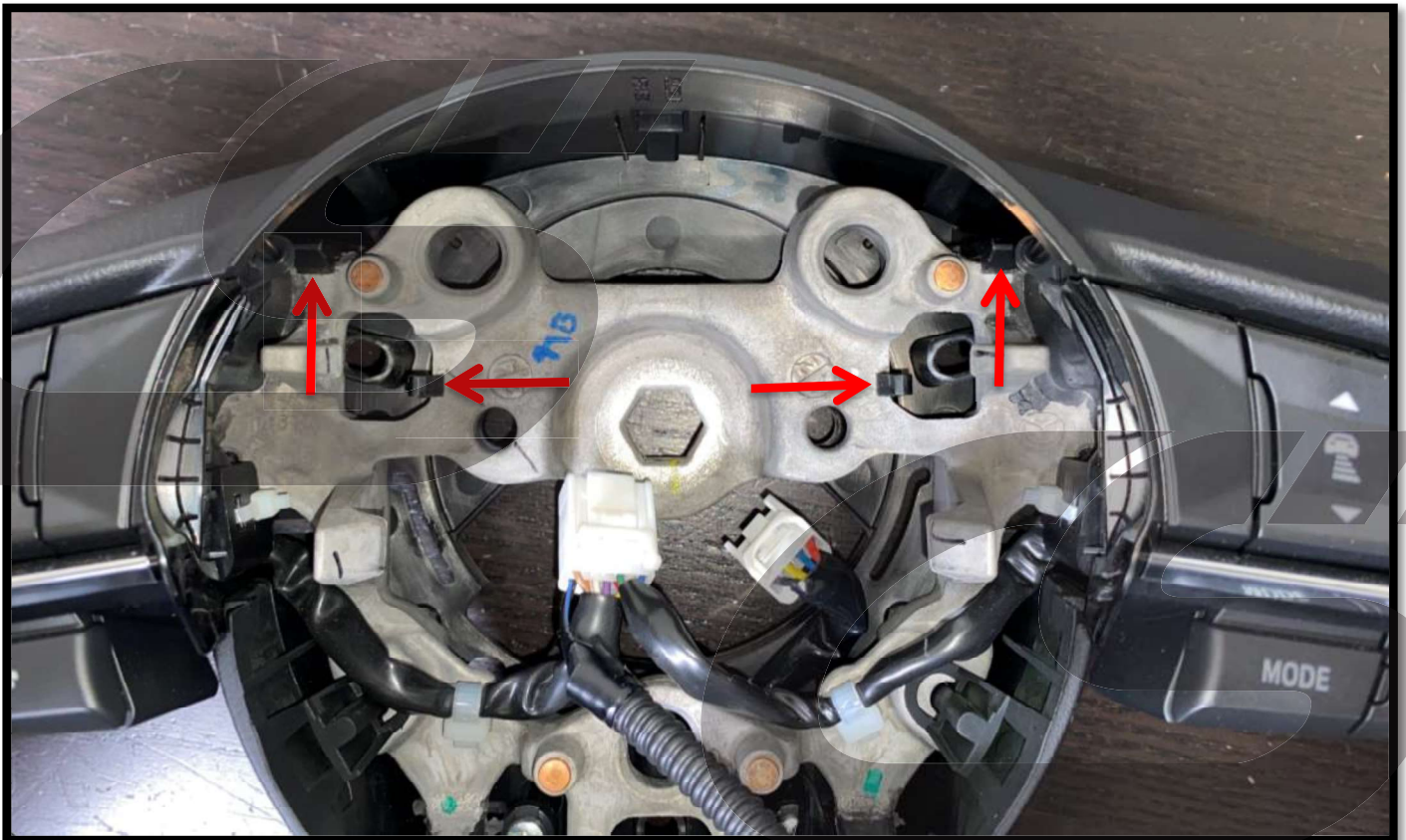


Heated steering wheel owners, read Steps 3c and 3d before continuing.

- b) Remove the rear trim from the OEM wheel. There are four tabs that lock it to the center of the wheel. Push these tabs off the metal center, then pull the backside wheel trim evenly to remove it. Tabs shown with **red arrows** in **Figure 3b**.



Figure 3a



DETAILED INSTRUCTIONS:

3. Removing the Trim & Buttons from OEM Wheel (continued)

- c) If equipped, the heated steering wheel power will need to be unplugged from the heating element. Shown in **Figure 3c**.
- d) If equipped, the end of the heated steering wheel element will need to be removed from the rear wheel trim. The white and black pad is glued to the wheel trim. Use gentle force to remove it. Shown removed in **Figure 3d**.



Figure 3c

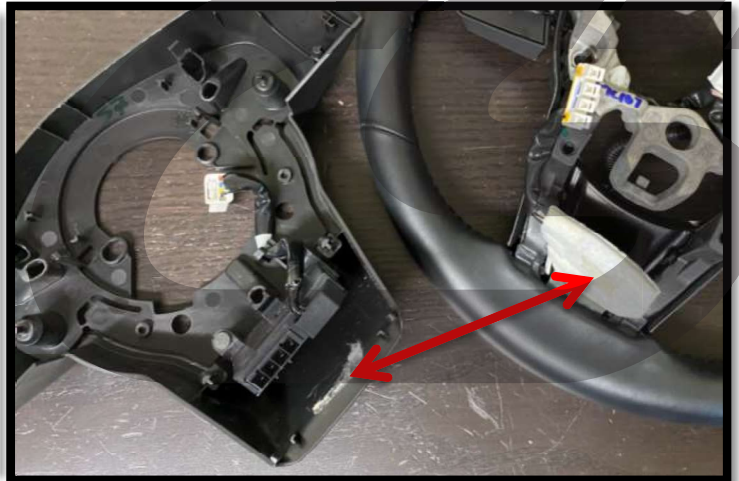


Figure 3d

- e) Release the white clips that secure the steering wheel button wiring. Shown **circled in red** in **Figure 3e**.
- f) Remove the steering wheel buttons. Push the tabs **circled in blue** in **Figure 3e** evenly until the buttons come free from the wheel.

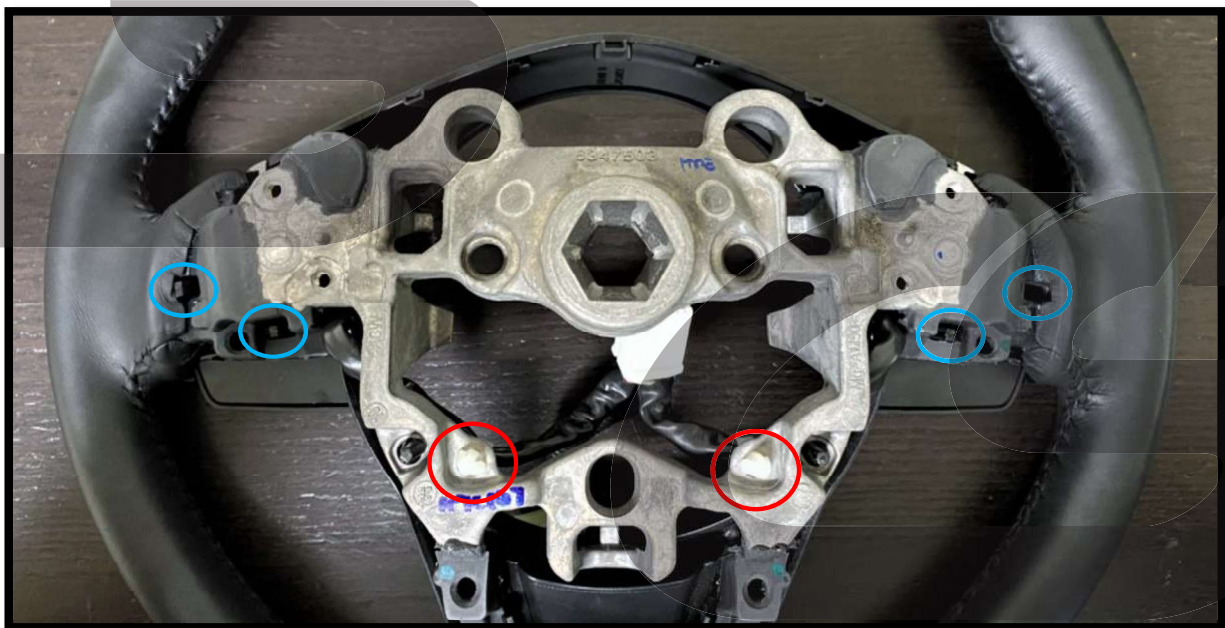


Figure 3e

DETAILED INSTRUCTIONS:

3. Removing the Trim & Buttons from OEM Wheel (continued)

- g) **Release the black clips that secure the lower steering wheel trim.** Push them in the direction shown in **Figure 3f** with **red arrows**. These clips can easily pop back into place during trim removal. Use caution to not break these clips.
- h) **Remove the lower trim from the OEM wheel.** There are four tabs that lock it to the center of the wheel. Push these tabs off the metal center, then pull the lower wheel trim evenly to remove it. Tabs shown with **blue arrows** in **Figure 3f**.

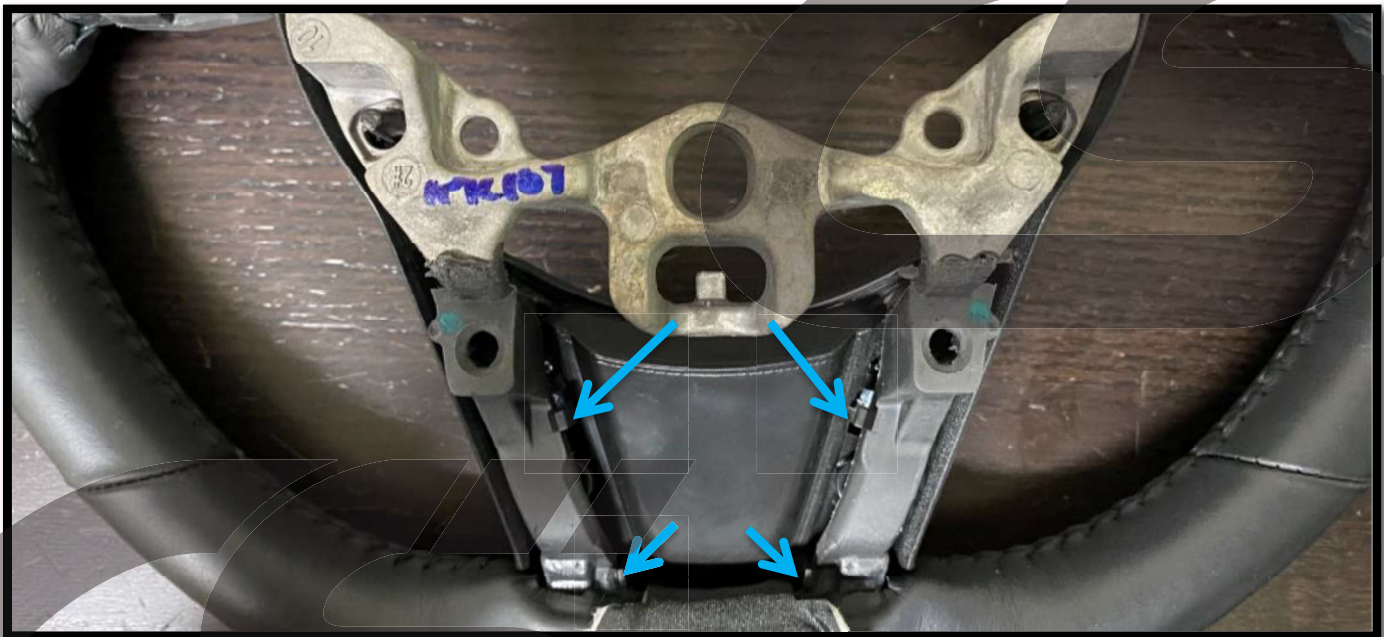


Figure 3f

4. Installing the Trim & Buttons on CorkSport Wheel

- a) **Install the lower trim piece onto the CorkSport steering wheel.** It will lock into place in the large hole **circled in red** in **Figure 4a** on the next page. The clips removed in Steps 3g and 3h will easily pop back into position.
- b) **Install the buttons onto the CorkSport steering wheel.** They will lock into place in the holes **circled in blue** in **Figure 4a** on the next page.
- c) **Secure the white wiring clips into the holes circled in green** in **Figure 4a** on the next page.

DETAILED INSTRUCTIONS:

4. Installing the Trim & Buttons on CorkSport Wheel (continued)

- d) Install the rear trim onto the CorkSport steering wheel. Press evenly and the four tabs removed in Step 3b will pop back into position.
- e) If equipped, reinstall the paddle shifters using the four screws removed in step 3a.



Figure 4a

DETAILED INSTRUCTIONS:

5. Installing the CorkSport Steering Wheel

- a) Guide the airbag wires through the center of the steering wheel and place the wheel on the steering column. Verify the two plastic prongs are inserted through the holes **circled in red** in **Figure 5a**.

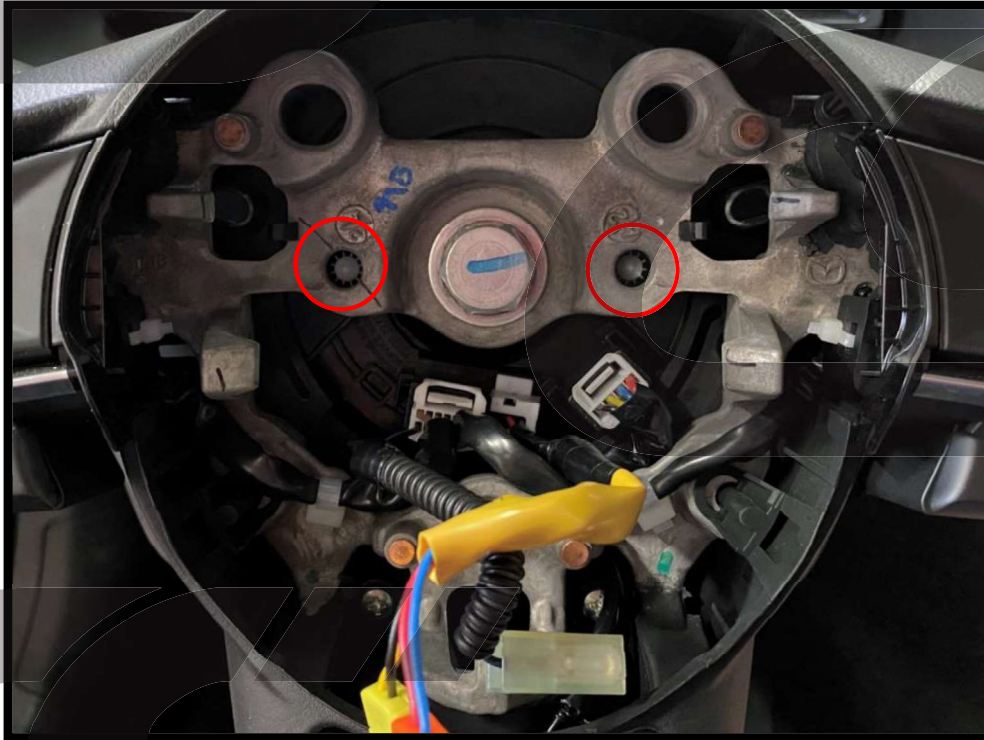


Figure 5a

- b) Secure the steering wheel using the OEM 21mm bolt. Tighten the bolt to **31-39 ft-lbs** using a 21mm socket, extension, and torque wrench
- c) Reattach the electrical connectors for all steering wheel controls.
- d) Follow Steps 1i-1k in reverse in order to reconnect the electrical connectors of the airbag.
- e) Line up the airbag so the Mazda emblem is upright. Push it into the center of the wheel until it locks into place.
- f) Reattach the negative battery terminal.



This completes the installation of your CorkSport Performance Steering Wheel. Verify the steering wheel can rotate without obstruction before operating the vehicle. Enjoy the improved driver feel and stylish new look!

WHAT'S NEXT?

CorkSport 80mm Exhaust

Wake up your 2014-2018 Mazda 3 with the CorkSport 80mm Cat Back Exhaust. The next step up in volume from the existing 60.5mm CorkSport exhaust; the 80mm variant offers a great sounding, loud exhaust that doesn't ruin the daily drivability of the MZ3.

More power, better looks, and a sound that changes a boring daily driver into a fun backroads car all come in an easy to install package. Plus, the large diameter piping future-proofs your ride for upcoming CorkSport parts!



CorkSport Big Brake Kit

At just over 7lbs, the aluminum CorkSport Mazda Big Brake Kit shaves almost 7lbs of unsprung weight off of each corner of your Mazda, all while adding more stopping power and a much better pedal feel. Crafted from lightweight billet aluminum, the CorkSport calipers use an opposed piston design that is fixed to provide greatly improved pad wear and caliper rigidity compared to the OEM design. Available in 3 anodized colors, this brake system includes everything you need to easily upgrade your stock braking system and includes high strength steel brackets, calipers, stainless steel braided front brake lines, brake pads, all necessary hardware, and one-piece 325mm rotors. Just install and go, no searching for extra parts or ordering additional items.

CorkSport Adjustable Rear Swaybar

Remove the tendency to overpower the front tires under hard cornering and minimize traction robbing body lean with the CorkSport Mazda 3 Rear Adjustable Sway Bar. Compressing inside suspension, the CorkSport Mazda3 Rear Sway Bar effectively increases the spring rate on side of the suspension which is compressed most and its adjustability allows you to fine tune the handling. Each Mazda 3 swaybar includes machined 6061-T6 aluminum swaybar brackets which are more durable than the stamped steel design common with other swaybars and look sharp with an anodized black finish.

