

# CorkSport Performance

## AXL-8-822 Gen2 Mazdaspeed3 & Gen3 Mazda 3 Hatch Wing Extension

Gen2 Mazdaspeed3 & Gen3 Mazda 3 Hatch Wing Extension Installation Instructions

Written By: Quintin Gunn



## INTRODUCTION

Vehicle used is a 2013 Mazdaspeed 3 with a CorkSport Carbon Fiber Spoiler. Installation will be similar for OEM spoilers.

For Installation on the 3rd Gen Mazda 3 Hatch, the install will be similar and the aftermarket MS style spoiler must be used.

### TOOLS:

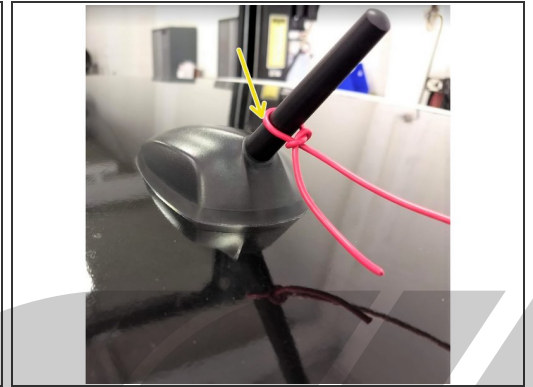
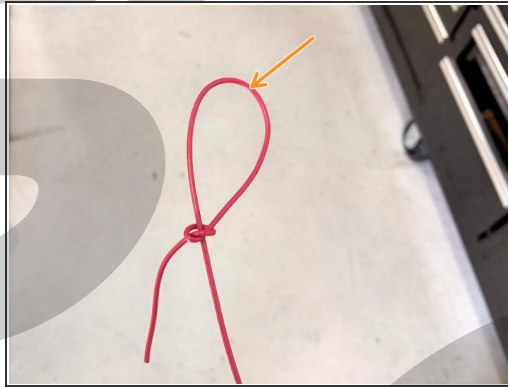
- 1/8" Drill Bit (1)
- Cordless Power Drill (1)
- Socket 8mm (1)
- Wrench, 8mm (1)
- Socket, 10mm (1)
- Wrench, 10mm (1)
- string (1)
- Blue Painters Tape (1)
- Marker (1)
- Friend (1)
- 90 degree screwdriver (1)

## Step 1 — Getting Started



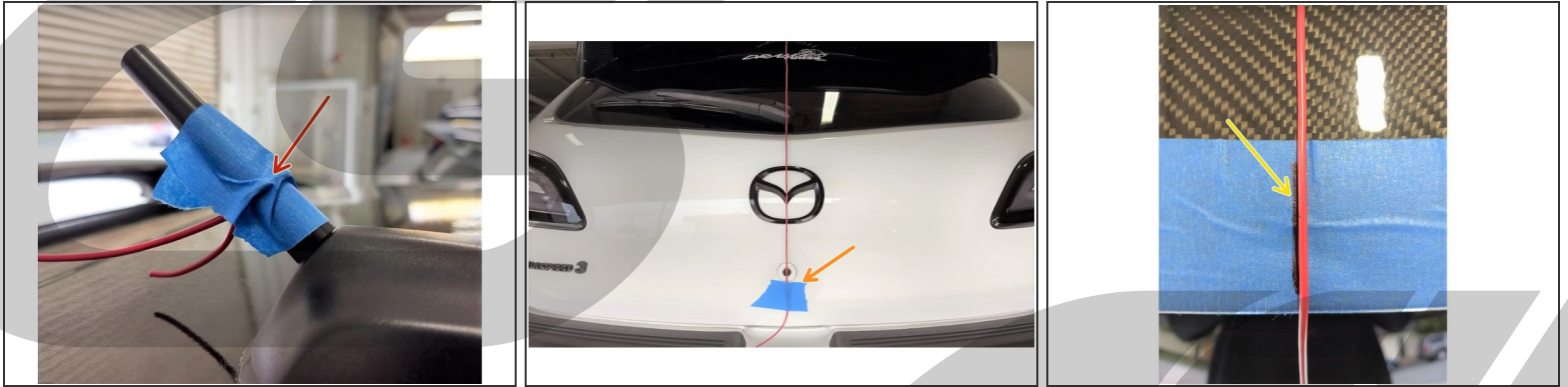
- First and foremost; THANK YOU for becoming a part of the CorkSport Family. We hope to bring you the highest level of Parts, Customer Service, & Support
- ⓘ How To Use These Instructions:
  - The instruction format will relate colored marking in the image to the color dot in the text to the right of the image
- ⓘ The vehicle featured in this installation guide is equipped with the Corksport Mazdaspeed3 Carbon Fiber Spoiler, as well as a Corksport Stubby Antenna. The steps outlined in this guide will be identical to OEM parts
- ⓘ Installation on a 3rd Gen Mazda 3 Hatchback must be using the aftermarket MS style spoiler and will be similar to the Mazdaspeed 3

## Step 2 — Measure and Mark Center of OEM Wing - Part 1



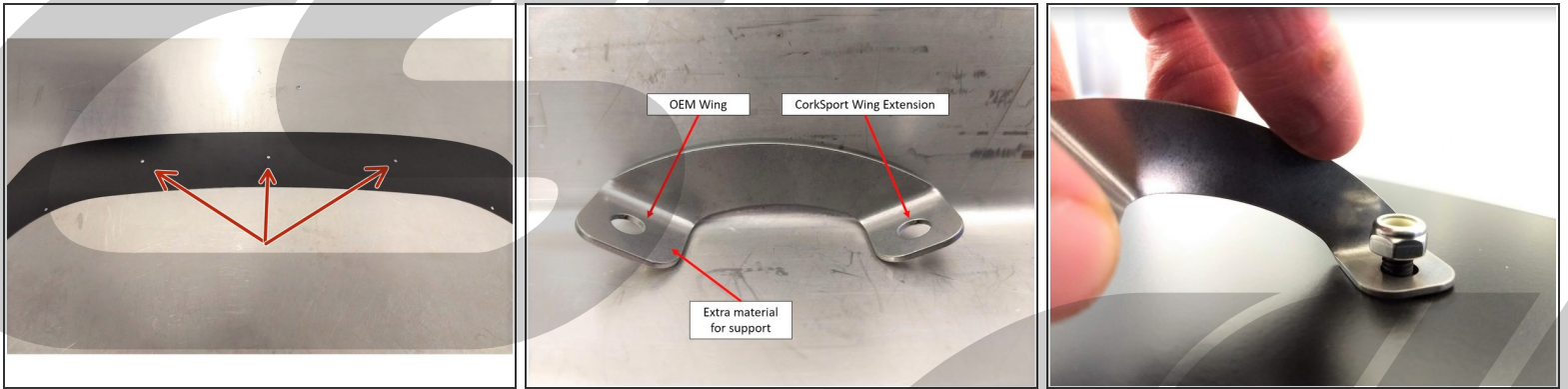
- ① Ensure your vehicle is parked in a well-lit area
- Place a strip of Blue Painter's Tape along the top edge of OEM wing as shown
- Cut and prepare ~5ft of String
- On one end of the string, make a loop, as shown
- Place the loop over the Rooftop Antenna and tape in place as shown

### Step 3 — Mark and Measure Center of OEM Wing - Part 2



- Tape the string loop in place as shown
- Pull the string taught and drape over the top edge of the OEM wing
- Tape the other end of the string to the face of the Hatch so as to be aligned with the center point in the Mazda emblem
- ⓘ If your vehicle has been debadged, use the raised ridge in the center of the hatch and the trunk release button as a center guide
- ⓘ The center line of the Rear Window Defrosters may also be used as a center guide
- Using a **marker**, mark the centerline of the vehicle on the Blue Painter's Tape as shown

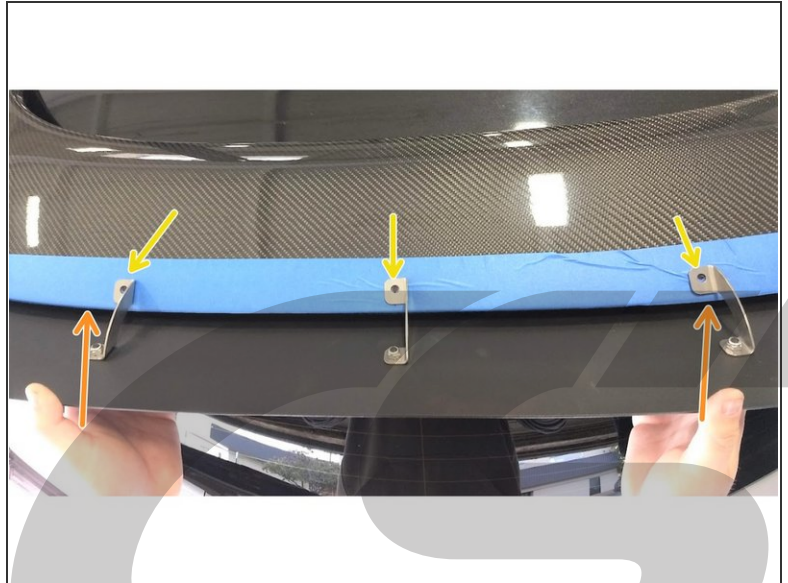
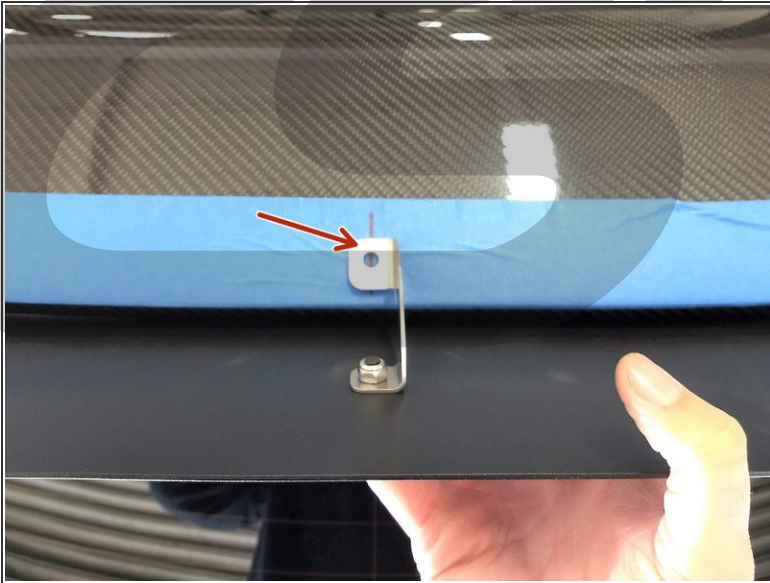
## Step 4 — Prepare CorkSport Wing Extension



- Using the provided Qty(3) **M6 bolts** and **locknuts**, mount the brackets to the Corksport Wing Extension in the indicated locations
- ⚠ **Brackets are NOT reversible. Ensure the bracket-end without the extra material is mounted to the Wing Extension**
- Using a **10mm socket** on one side, and a **10mm wrench** on the other, tighten until the bracket is no longer able to freely rotate
- ⓘ Do not tighten completely until the final step to ensure proper alignment

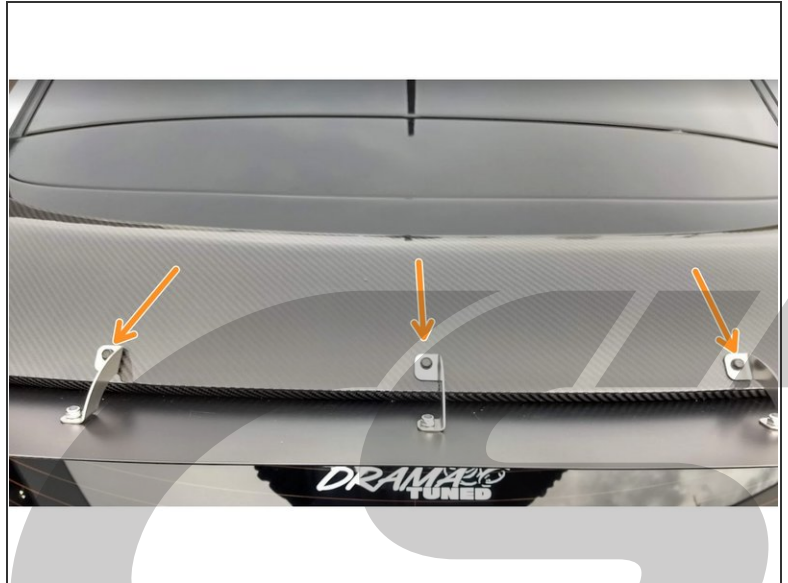
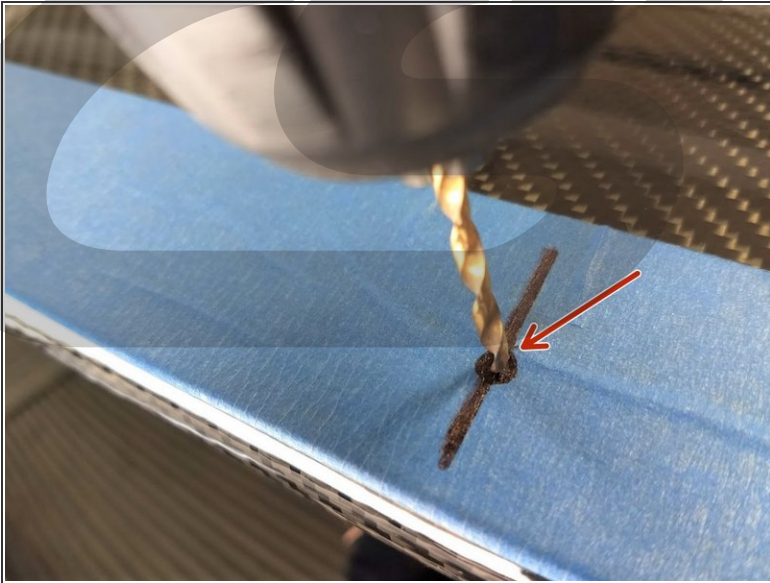


## Step 5 — Mark Bracket Mounting locations



- Place assembled wing extension on the surface of the OEM wing with the center bracket aligned on the center mark, as shown
- Hold the wing at the outer bracket locations and push against the OEM wing
  - ⓘ The Wing Extension will bend. This is Normal
  - Ensure the surface of all three brackets are flush with the surface of the OEM wing by pushing down on the brackets
    - ⚠ Brackets not being flush with the surface of the wing will result in improper fitment
- Have a **friend** mark the drill locations for all three brackets with a **marker**, as shown

## Step 6 — Drill and Mount Top Brackets



- With an **1/8in Drill Bit**, drill into the OEM wing at the Qty(3) previously marked locations
- Clean the debris from the mounting locations and remove the **Blue Painter's Tape**
- Align the wing extension and brackets with the drilled holes
- Using an **8mm socket**, fasten the wing extension to the OEM wing using **Qty(3) #10 Self-tapping screws**



## Step 7 — Mark and Drill Bottom Mounting Locations



- Push the wing on the sides so it contours the OEM wing and is flat against its surface
- Using the holes in the Wing Extension as a guide, drill in the **Qty(4)** bottom mounting locations with an **1/8" Drill bit**. The 90deg tool may be needed here.
- Release pressure from holding the wing and clean the debris from the drilling sites
  - ⓘ The wing will hang from the top brackets. This is OK for this step
- Once drilled, use the remaining **Qty(4)** #10 Self-tapping screws to attach the wing to the vehicle
  - ⚠ **Tighten until snug. Do NOT overtighten**
- With a **10mm socket** on one side and **10mm wrench** on the other, tighten the top Qty(3) 10mm bolts completely
- Give the wing a slight wiggle to test its sturdiness. If there is any flex or rattle, tighten the bolt closest to where the flex/rattle is found

## Step 8 — Installation Complete



- This completes the installation of your new CorkSport Performance Wing Extension!
- Contact us with any questions or concerns at [sales@corksport.com](mailto:sales@corksport.com) or (360) 260-2675. Leave us a review at: <https://corksport.com>
- Share your experience using #CorkSport on Instagram, Facebook, and Twitter.